

SONY



Z-Phosphor

4K UHD BTTM
ASE

3LCD

VPL-FHZ58, VPL-FHZ61
& VPL-FHZ66
3LCD laser projectors

Up to 20,000 hours virtually maintenance-free

Enduring quality

Our leading range of 3LCD laser projectors

Our 3LCD laser line-up features the VPL-FHZ58, VPL-FHZ61 & VPL-FHZ66 in our market-leading range. Perfect for education, business and public sector settings, they combine powerful, laser light source with Sony's advanced 3LCD BrightEra™ technology to deliver outstanding performance and durability.

4,200 - 6,100 lumens of white and colour brightness

Achieving a high 4,200, 5100, and 6,100 lumens of white and colour brightness, the VPL-FHZ58, VPL-FHZ61 & VPL-FHZ66 project crisp, clear, high contrast WUXGA images at more than Full HD resolution (1920 x 1200). Colours are rich and natural and picture stability is exceptional.

Up to 20,000 hours durability

Along with outstanding performance comes stamina and reliability. The VPL-FHZ58, VPL-FHZ61 & VPL-FHZ66 offer up to 20,000 hours* of maintenance-free operation, representing a substantially lower total cost of ownership than any conventional lamp projector.

*Actual hours may vary depending on usage and environment



Key features

4,200 - 6,100 lumens of white and colour brightness and up to 20,000 hours* continuous operation

Reduced downtime and low TCO efficient, long-life LCD panels for increased durability

HDBaseT Simplified installations with a single cable

New bayonet lenses 3000 series, and upgrade compatible adaptor for 2000 and 1000 lens series

Advanced energy-saving features Auto Dimming mode and many more

Almost instant on/off with no warming up or cooling down time

360° Flexible installation position anywhere with angle-free tilt adjustment

Edge Blending create supersized content with multiple projectors

*Actual hours may vary depending on usage and environment

Projection features

Project onto non-flat surfaces with Image Warping

Easily correct image geometry for natural-looking projections – even on convex or concave surfaces. Corner and edge correction can be adjusted easily with the supplied remote and on-screen menu.

Reality Creation and Contrast Enhancer

Image quality is upscaled for a crisper, sharper picture, while dark and light areas are automatically adjusted without diminishing colour.

Side panel and panel cover

The input / output panel has been redesigned for these models to be located on the side of the projector. Cables are now neatly hidden within the panel cover to keep cables tidy.

Laser light source and Sony 3LCD BrightEra™ technology

This unique and highly efficient combination delivers exceptionally bright pictures with excellent colour accuracy and stability.

4,200 - 6,100 lumens of white and colour brightness

High impact 4,200, 5,100 and 6,100 lumens of white and colour brightness for a clear, detail-packed WUXGA resolution image (1920 x 1200), higher than Full HD.

Up to 20,000** hours operation

Virtually zero maintenance and no filter cleaning for 20,000 hours. The advanced filter keeps the projectors in peak condition, significantly reducing running costs compared to traditional lamp projectors.

Up to 500,000:1 contrast ratio

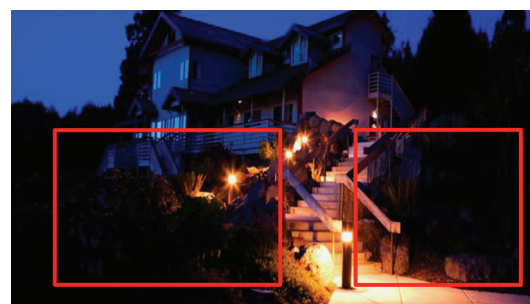
A high contrast ratio of 500,000:1 ensures deep, black lowlights and bright, sparkling highlights for sharp definition that will take your presentations to the next level.

Hg (Mercury) Free

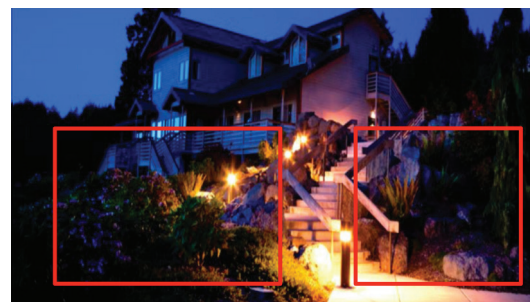
With no lamp, there's no Mercury, so the laser light source is a more environmentally friendly solution.

Edge Blending for super-sized displays

This built in feature allows images from multiple projectors to be joined seamlessly, creating one, stunning super-sized projection.



Contrast Enhancer OFF



Contrast Enhancer ON

Installation features

360° angle-free tilt

Position the projectors freely, at any angle, on their side or even upside down. Install wherever you need them, close to ceilings, near a screen or even horizontally offset them.

Wide Lens Shift, Zoom and Throw Ratio

Generous shift, zoom and throw lens adjustments give more flexibility for positioning the projectors where you need them. (Actual horizontal and vertical shift depends on lens used - optional lenses available)

HDBaseT™ – single cable system

HDBaseT™ multi-signal installation system via a single cable. This cuts cabling costs as well as the need for extra signal extenders and receiver boxes. One Cat5e/6 cable runs up to 100m.

Energy-saving features

Auto Dimming Mode

After 10 seconds of static signal feed, the light source dims by approximately 15% (barely noticeable). If powered on while not in use, the light source dims to as low as 5% of original brightness.

Auto Light Source Control

Brightness is automatically adjusted depending on the projected image to minimise power consumption. When showing darker images, the light source output decreases.

Almost instant on/off,

Laser light source means there is no need to warm up or cool down any UHP lamps. The projectors turn on and off virtually instantaneously with a push of the remote commander.

Low power consumption with No Input

Automatically detects no signal and dims the light source to as low as 0% of original brightness.

Constant brightness mode for stable projection****

Maintain constant brightness for the expected 20,000 hours operational life for a consistent visual experience.

PrimeSupport

This projector comes supplied with a 5 year / 12000 hours operation support pack when sold in the EU, Norway and Switzerland, which offers unique extra services and benefits:

- 5 year cover***
- Free telephone helpdesk support in English, German, French, Italian and Spanish
- Collection and delivery anywhere in the EU, Norway and Switzerland
- Optional PrimeSupport Elite Swap packages available.
5 Year / 12,000 Swap
5 Year / 20,000 Swap

PrimeSupport



*** Subject to Hours on Optical Engine and laser light source will be applied

**** Constant Brightness feature will reduce brightness to approx 75% of original specified brightness



Ideal for:

- Universities (auditoriums / large classrooms)
- Corporate boardrooms
- Museums



Exceptional brightness for
a clearer, crisper picture

Specifications

		VPL-FHZ58	VPL-FHZ61	VPL-FHZ66
Display system		3 LCD system		
Display device	Size of effective display area	0.76"(19 mm) x 3 BrightEra LCD Panel, Aspect ratio: 16:10		
	Number of pixels	6,912,000 (1920 x 1200 x 3) pixels		
Projection lens	Focus	Powered		
	Zoom – Powered/Manual	Powered		
	Zoom – Ratio	Approx. x 1.6		
	Throw ratio	1.39:1 to 2.23:1		
	Lens shift – Powered/Manual	Powered		
	Lens shift – Range Vertical	-5% / + 60%		
	Lens shift – Range Horizontal	+/- 32%		
Light source	Type	Laser diode		
Filter cleaning / replacement cycle (Max.)*2	Filter cleaning / replacement cycle (Max.)	20000 H (cleaning)		
Screen size*1	Screen size (measured diagonally)	40" to 600" (1.02 m to 15.24 m)		
Light output	Lamp mode: Standard	4200 lm	5100 lm	6100 lm
	Lamp mode: Low	3000 lm	3500 lm	4000 lm
Color light output	Lamp mode: Standard	4200 lm	5100 lm	6100 lm
	Lamp mode: Low	3000 lm	3500 lm	4000 lm
Contrast ratio (full white / full black)*3		500,000:1		
Displayable scanning frequency	Horizontal	15 kHz to 92 kHz		
	Vertical	48 Hz to 92 Hz		
Display resolution	Computer signal input	Maximum display resolution: 1920 x 1200 dots *4		
	Video signal input	NTSC, PAL, SECAM, 480/60i, 576/50i, 480/60p, 576/50p, 720/60p, 720/50p, 1080/60i, 1080/50i The following items are available for digital signal (HDMI input) only; 1080/60P, 1080/50p, 1080/24p		
Color system		NTSC3.58, PAL, SECAM, NTSC4.43, PAL-M, PAL-N, PAL60		
Keystone correction (Max.)	Vertical	+/- 30 degrees		
	Horizontal	+/- 30 degrees		
INPUT OUTPUT (Computer/ Video/Control)	INPUT A	RGB / Y PB PR input connector: Mini D-sub 15-pin (female) Audio input connector: Stereo mini jack		
	INPUT B	DVI input connector: DVI-D 24-pin (single link), HDCP support Audio input connector: Shared with input A		
	INPUT C	HDMI input connector: HDMI 19-pin, HDCP support Audio input connector: HDMI audio support		
	INPUT D	HDBaseT interface connector: RJ45, 4 play (Video, Audio, LAN, Control)		
	VIDEO IN	Video input connector: BNC Audio input connector: Shared with input A		
	OUTPUT A:	Monitor output for Input A Connector: Mini D-sub 15-pin (female) Audio output connector: Stereo mini jack		
	OUTPUT B	Monitor output for Input B Connector: DVI-D 24-pin (single link), HDCP not supported Audio output, Monitor out connector: Stereo mini jack		
	REMOTE	D-sub 9-pin (male) / RS232C		
	LAN	RJ45, 10BASE-T/100BASE-TX		
	IR (Control S)	Stereo mini jack, Plug in power DCSV		
Acoustic noise	Lamp mode: Standard	34dB		32dB
Operating temperature / Operating humidity		0°C to 40°C / 32°F to 104°F / 20% to 80% (no condensation)		
Storage temperature / Storage humidity		-10°C to +60°C / 14°F to +140°F / 20% to 80% (no condensation)		
Power requirements		AC 100 V to 240 V, 50 Hz / 60 Hz	AC 100 V to 240 V, 4.5 A to 1.9 A, 50 Hz / 60 Hz	AC 100 V to 240 V, 5.5 A to 2.3 A, 50 Hz / 60 Hz
Power consumption (Lamp mode: High)	AC 100 V to 120 V	367 W	420 W	515 W
	AC 220 V to 240 V	352 W	408 W	497 W
Power Consumption (Lamp mode: Low)	AC 100 V to 120 V	0.5 W		
	AC 220 V to 240 V	0.5 W		
Power consumption (Networked Standby Mode)	AC 100 V to 120 V	15.0W (ALL Terminals and Networks Connected, when "Standby Mode" is set to "Standard")		
	AC 220 V to 240 V	13.3W (ALL Terminals and Networks Connected, when "Standby Mode" is set to "Standard")		
Heat dissipation	AC 100 V to 120 V	1252 BTU/h	1433 BTU/h	1757 BTU/h
	AC 220 V to 240 V	1201BTU/h	1392 BTU/h	1696 BTU/h
Dimensions (W x H x D) (without protrusions)		Approx. 460 x 169 x 515 mm (18 1/8 x 6 21/32 x 20 9/32 inches)		
Mass		16 kg / 34 lb		
Supplied accessories	Remote commander	RM-PJ27		
Optional accessories	Projection Lens (throw ratios)	VPLL-3003 (0.33) / 3007 (0.65:1) / Z3009 (0.85-1.0) / Z3024 (2.34 to 3.19) / Z3032 (3.18 to 4.84)		
	Ceiling Bracket	PAM-310		
	Extension Pole & Ceiling plate	PAM-0.5M / PAM-1.0M / PAM-1.5M		

*1 With supplied standard lens. *2 This figure is expected maintenance time, not guaranteed time. The actual value depends on the environment and how the projector is used. *3 The value is average. *4 Available for VESA Reduced Blanking signal.

Distributed by

For full features visit: pro.sony

© 2018 Sony Corporation. All rights reserved. Reproduction in whole or in part without permission is prohibited. Features and specifications are subject to change without notice. All non-metric weights and measurements are approximate. 'Sony' and 'BrightEra' are registered trademarks or trademarks of Sony Corporation. All other trademarks are the property of their respective owners.

Sony is the leading supplier of AV/IT solutions to businesses across a wide variety of sectors including, **Media and Broadcast, Video Security, Medical, Digital Cinema and Displays**. It delivers products, systems and applications to enable the creation, manipulation and distribution of digital audio-visual content that add value to businesses and their customers. With over 25 years' experience in delivering innovative market-leading products, Sony is ideally placed to deliver exceptional quality and value to its customers. Collaborating with a network of established technology partners, Sony delivers end-to-end solutions that address the customer's needs, integrating software and systems to achieve each organisation's individual business goals. For more information please visit www.pro.sony.eu

Follow us on Twitter at [@SonyDisplays](https://twitter.com/SonyDisplays)

SONY